



Raymand Teb CO.

Manufacturer of laboratory equipment



www.raymandteb.com



raymand.teb@gmail.com



Direct communication with management +989121956803



Head Office: Unit 2, No3, Timuri Allay, Khosh St, Imam Khomeini St,
Tehran , Iran



Laboratory oven

Smart PID Temperature Controller

Temperature range from 50 to +200 degrees Celsius

Ability to adjust temperature

Mercury thermometer can be placed

Temperature accuracy of ± 1 °C

Temperature tolerance ± 2 °C

The outer body is made of steel sheet with electrostatic paint coating
The internal housing is made of stainless steel, resistant to corrosion

The insulation material of the body is made of first-class rock wool
movable floors

Easy to clean

The ability to add a circulating fan for temperature uniformity
in different floors (custom)

Manufacturing at higher temperatures up to 300 degrees Celsius (custom)



Labratory Incubator

Intelligent PID temperature controller

The temperature range is 5 degrees higher than the ambient temperature up to +70 degrees Celsius

Ability to adjust temperature

Ability to place a mercury thermometer

Temperature accuracy ± 0.4 degrees Celsius

Temperature tolerance ± 0.5 degrees Celsius

Outer body of steel sheet with electrostatic paint coating

Inner chamber made of stainless steel, resistant to corrosion

The insulation material of the body is made of first-class rock wool moving floors

Easy cleaning

Ability to add a circulating fan for temperature uniformity in different floors (customized)

Two glass and metal doors (55 liters in volume)

In larger volumes, the door is accompanied by double-glazed glass



Labratory water bath

Intelligent PID temperature controller

The temperature range is 5 degrees higher than the ambient temperature up to +100 degrees Celsius

Ability to adjust temperature

Ability to place a mercury thermometer

Temperature accuracy ± 0.1 degrees Celsius

Temperature tolerance ± 0.5 degrees Celsius

Outer body of steel sheet with electrostatic paint coating

Inner chamber made of stainless steel, resistant to corrosion

Easy cleaning

Ability to add a circulating fan for temperature uniformity (custom)

Custom dimensions are accepted



Single distilled water

In two models of steel or Pyrex condensers

With inlet and outlet water level control

Fully automatic, easy to wash and remove sediment

Inner stainless steel body

The element is made of copper with chrome coating

Model	Hourly Capacity Litr/h	Colling Water Litr/h	Over Dimension (mm)			Power (kw)	Volts (v)	Amps (A)
			Wide	Deep	High			
2002A	2	40	170	190	370	2	220-230	8.6
2004A	4	40	190	220	420	3	220-230	13.6
2008A	8	60	250	300	500	6	220-380	27.9
2012A	12	60	250	300	500	9	220-380	40.5



Double-distilled water

It has two pyrex condensers

It has an input and output water level control system

It has a device sedimentation time warning

Pyrex cooling system (condenser).

Fully automatic, washable and easy to remove deposits

Inner body made of stainless steel

The elements are made of copper with chrome coating

Three-phase power consumption

Model	Hourly Capacity Litr/h	Colling Water Litr /h	Over Dimension (mm)			Power (kw)	Volts (v)
			Wide	Deep	High		
2102	2	72	470	260	500	3.5	220-230
2104	4	120	550	280	570	6.5	220-380
2108	8	198	700	390	700	11.5	220-380



Centrifuge with electric door

Has a moving head

Adjustable speed from 500 to 4000 rpm

No noise or vibration

Touch microprocessor control system

Electric and manual emergency opening door

Steel body material with electrostatic paint coating

It has a -99minute timer

With handle and microswitch (when working, if the door is opened, the device will stop automatically)

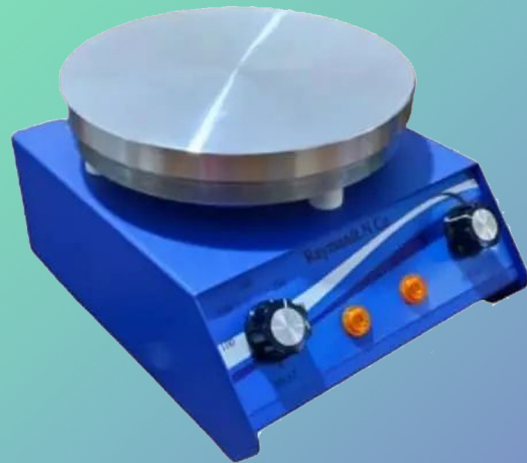
In the models:

4 branches suitable for 50cc Falcon tube

8 branches suitable for 15cc Falcon tubes

16 branches

24 branches



Hot plate stirrer

Round aluminum plate with a diameter of 18 cm

Thermostatic

The temperature range of the plate is from 50 to 300 degrees Celsius

It has a voltage dimmer to adjust the speed of the mixer

The speed of the mixer motor is from 500 to 1400 rpm

Ability to rotate with a magnet of 2.5 cm

Has a 500 watt element



PH Meter

Display temperature in two modes, Celsius and Fahrenheit, range 0 to 100 degrees Celsius

Measurement of PH and MV

High speed of response

Intelligent Calibration

Automatic detection of the buffer during calibration

Ability to correct buffer error

The possibility of displaying the electrode error

It has LCD digital screen

PH working range: 14.00 to 00.00, measurement precision 0.01

Working range of MV: +1999 to -1999, measurement accuracy ± 1

Memory: Last 20 data

Dimensions: 18cm x 24cm